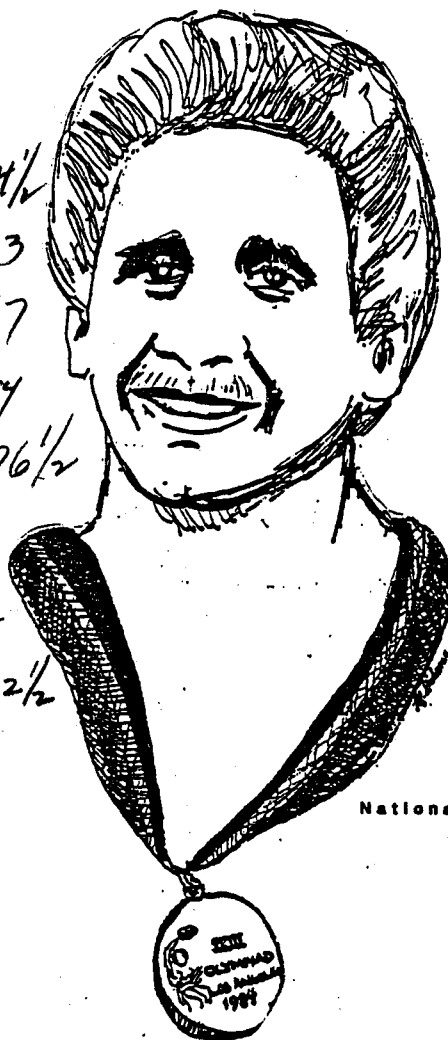


50TH ANNUAL NATIONAL PREP SCHOOL WRESTLING TOURNAMENT

Blair 182
Bullis 108
Bishop Eagan 104 1/2
Bishop Iretton 103
Arch. Curbey 97
Mt. St. Joseph 84
Woodbury Forest 76 1/2
Fetman 73
Arch. Wood 72
Episcopal Ac. 62 1/2



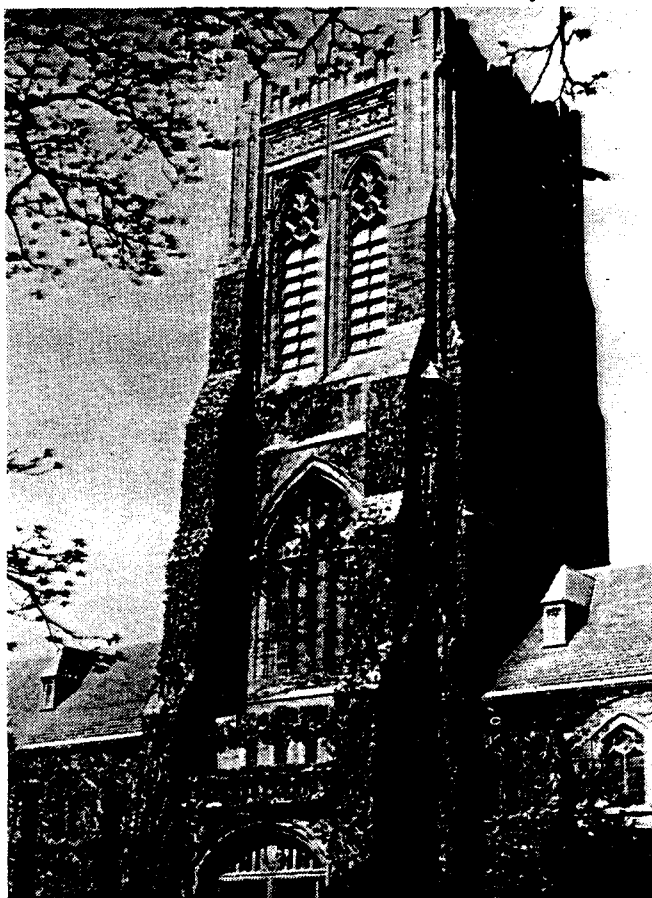
Bobby Weaver

National Prep School Champion, 1978
Olympic Gold Medalist

LEHIGH UNIVERSITY

MARCH 8-9, 1985

SOUVENIR PROGRAM: 50¢



Alumni Memorial Building

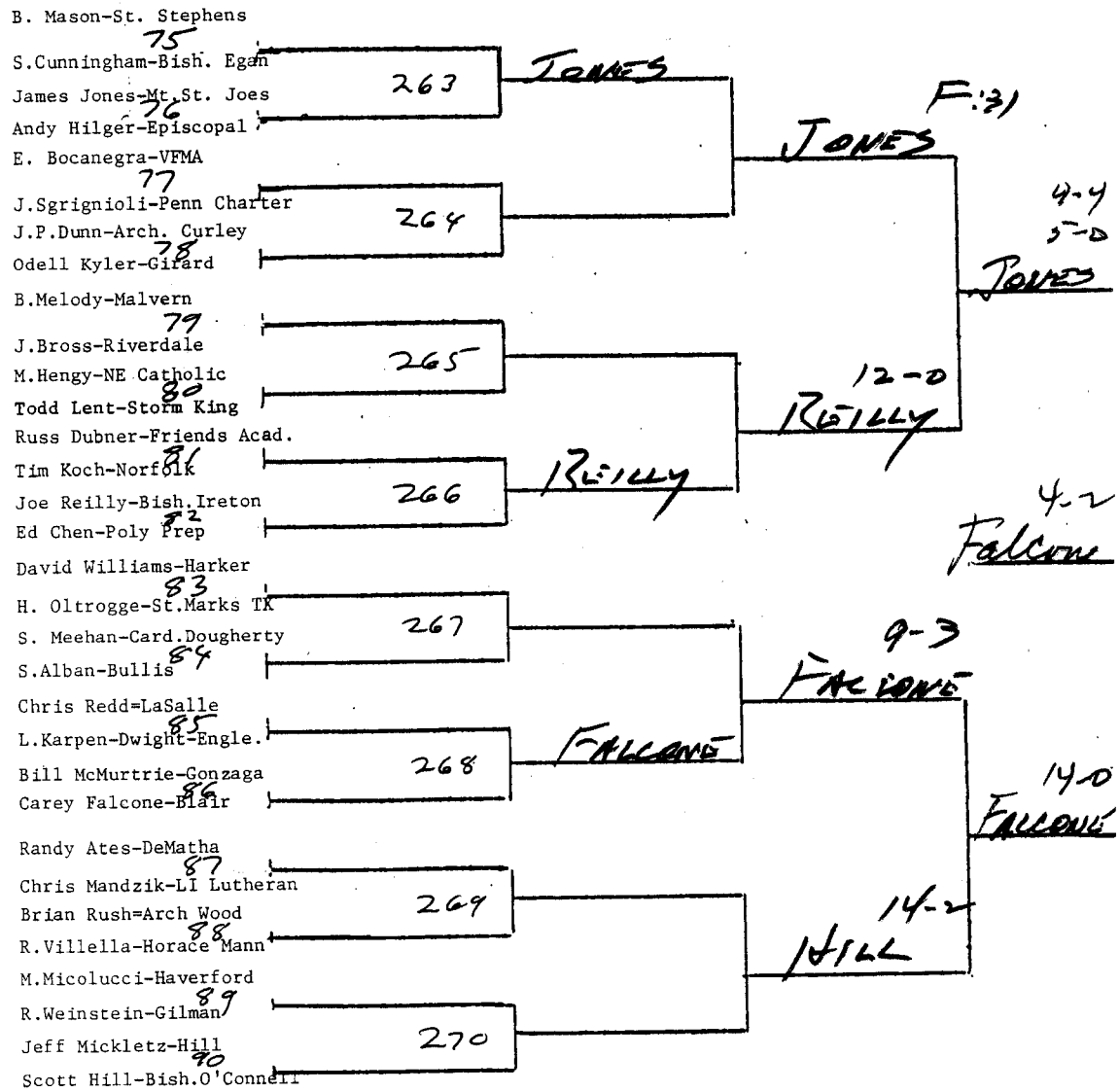
LEHIGH UNIVERSITY

Lehigh University was founded in 1865 by industrialist and philanthropist Asa Packer, combining the traditional American college of liberal arts, the European university and the technical institute of university rank. Women undergraduates were first admitted in 1971 and the enrollment, men and women, stands at 4,400. An additional 1,900 graduate students are enrolled. They are from 44 states and 28 foreign nations.

The University includes on its 725-acre campus the College of Arts and Science, the College of Business and Economics, the College of Engineering and Physical Sciences, the Graduate School, the School of Education, 11 interdisciplinary Academic and Research Centers, nine institutions, Fairchild Lab and Fritz Lab.

Lehigh offers 56 major subjects with 2,000 course titles, an accelerated M.D. program, a special dental program, five-year, two-degree programs; foreign study options and Army and Air Force ROTC programs. Ninety-five percent of the faculty members hold Ph.D.s or SC.D.s. There are two major libraries with 660,000 volumes and 15 honorary societies including Tau Beta Pi (engineering), founded at Lehigh in 1885, Phi Beta Kappa (general excellence) and Beta Gamma Sigma (business).

Ninety-five percent of the students live in university residences or apartment complexes, 31 fraternities or four sororities, or on their own. There are 22 varsity sports teams and 86 percent of the men and women participate in recreational and intramural athletics at the Bethlehem, PA, campus.



Brian Shea-Loyola

BYE

John Donahue-Arch. Wood

Paul Clavel-Blair

D. Rianhard-Gilman

Danny Mojica-Storm King

BYE

Marty Gooden-Arch Carroll

Pete Tashjian-Friends Cent.

BYE

Chris Blake-Bish. O'Connell

Chris Krafczek-Hill

BYE

Jack Ambler-Plumstead Ch.

BYE

Kurt Tamai-DeMatha

Sam Boccella-Bish. Kenrick

BYE

BYE

Mel Shabelski-St. Stephens

Mike Topiel-Horace Mann

BYE

Mark Giacobba-Mt. St. Joes

Phillipe Ngo-NE Cath.

Scott Metcalfe-Calvert Hall

BYE

BYE

Dan McHugh-Bish. Egan

Doug Davis-Haverford

Rich Pinto-Neumann

BYE

Justin Ebert-Acad New Church

271

272

273

274

275

276

277

278

F 5:34
GOODEN

F 4:47
TAMAI

13-7
BOCCIELLA

7-3
McHUGH

14-2
TAMAI

9-5
McHUGH

13-5
McHUGH

C. Fanzo-Arch. Curley

109#

96
B. Fox-NE Cath.

279

M. Deeming-St. Joes

97
T. Ball-St. Stephens

D. Salvemini-LI Luth.

98
J. Vazquez-Norfolk Cath.

280

S. Augustine-Mr. St. Joe

99
L. Zuriff-Horade Mann

B. Klein-Bish. O'Connell

100
D. Thompson-Milton

281

J. White-Model

101
K. Melinson-LaSalle

F. Armenante-Peddie

102
T. Sanders-Calvert Hall

282

W. Dawson-Hill

T. Howson-Shady Side

103
C. Lee-Bullis

K. Tamai-DeMartha

S. Saad-Friends Acad.

M. Siravo-Bish. Egan

104

A. Webber-Gov. Dummer

283

105
R. Piacesi-Gonzaga

C. Coffin-Arch. Wood

106
B. Darrell-Md Sch. Deaf

284

C. Carver-Norfolk

107
M. Hill-Episcopal

T. McEntee-Haverford

108
M. Lausten-Bish. Ireton

285

S. Riddell-Bish. Kenrick

109
C. Synn-Lawrenceville

J. Small-Hyde

110
J. Knapp-Neumann

286

M. Hafner-Plumstead Ch

111
P. Wood-Wood Forest

FANZO F248

5-3
LEE

4-3
LEE

4-3
TAMAI

F 1:33
TAMAI

4-3
TAMAI

F1:48
WOOD

- S.Profacci-Peddie
- 112
- M.Rispo-NE Cath. 287
- E.Little-I.L. Lutheran
- 113
- K.Theodore-Hopkins
- B.Rhoades-Wood Forest
- 114
- M.Micolucci-Haverford 288
- B.Durkee-McDonogh
- 115
- E.Tappert-Hackley
- J.Zieger-Penn Charter
- 116
- P.Magyar-Wilbraham 289
- A.Ronson-Horace Mann
- 117
- C.Telly-Plumstead
- D.Lustig-Dalton
- 118
- F.Mascaro-Episcopal 290
- M.Riddell-Bishop Kenrick
- 3
- D.Gura-Rutgers Prep.
- 119
- J.Angelos-Gilman
- L.Schaufele-Mt. St. Joes
- 120
- B.Wogisch-Neumann
- 4
- G.Lanctot-Bishop Egan
- P.McCarthy-Norfolk 291
- 121
- T.McCloskey-St. Joes
- M.McLees-LaSalle
- 122
- N.Clavel-Blair 292
- B.Tuttle-Arch Wood
- 123
- D.Garvie-Bish D'Connell
- Y. Oh -Chestnut Hill
- 124
- B.Bunting-Bullis 293
- M.Mardiney-Lawrenceville
- 125
- K.Sutton-McBurney
- M.Mangrum-Bish. Ireton
- 126
- C.Te-Poly Prep 294
- B.Hultman-Sewickley
- 127
- T.Zakel-Arch Walsh

15-9
PARAC

7-5
PARAC

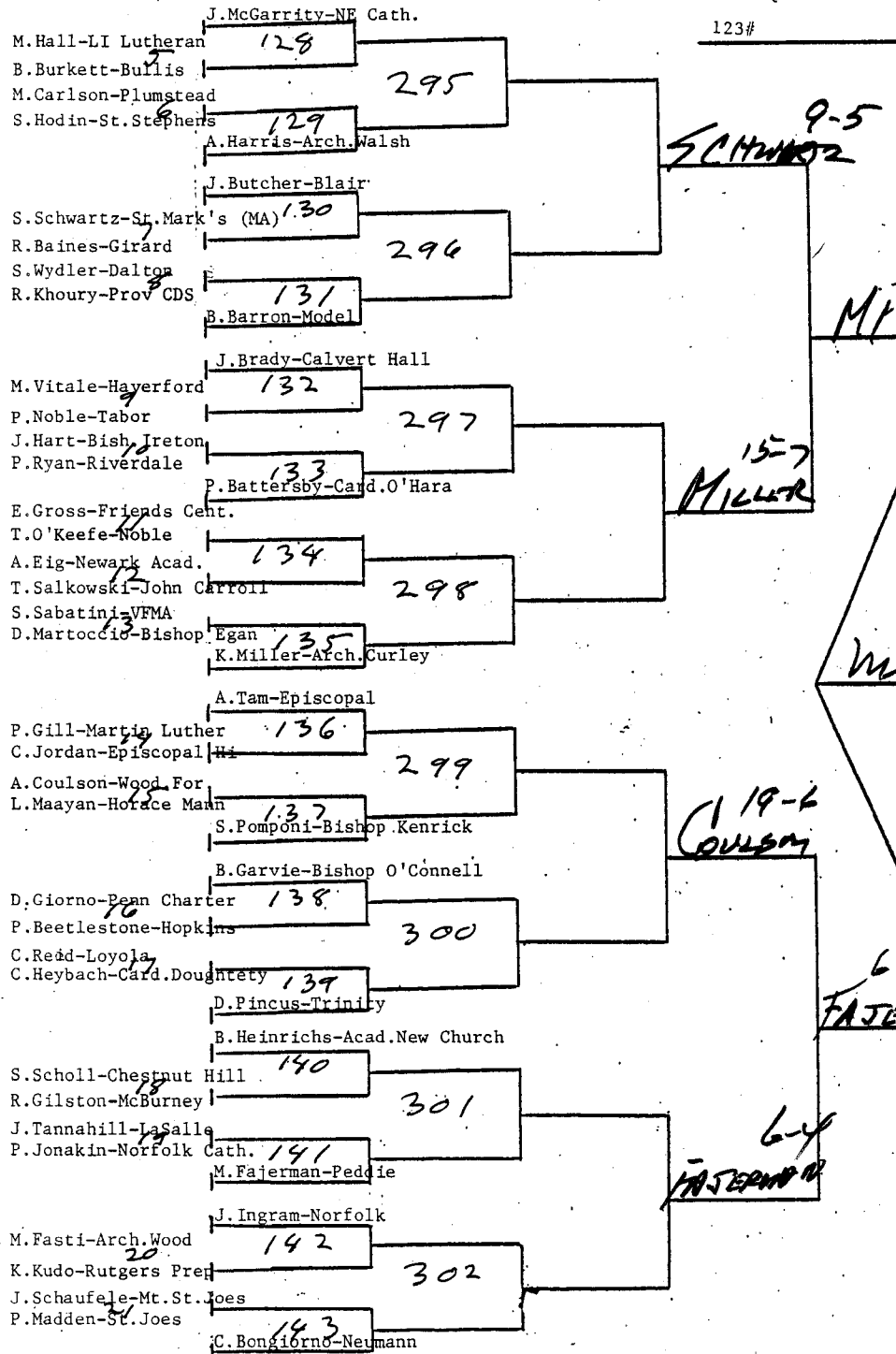
11-2
RUGGERS

10-4
MANGRUM

5-4
CHATEL

3-40
MANGRUM

7-1
MANGRUM



- B. Brady-Bish. Egan
- S. Hilger-Shady Side 144
- D. Harrison-Arch. Copley 303
- B. Slutzky-McDonogh 145
- F. Zvarick-Hil 304
- L. Pendleton-Acad. New Church 146
- F. Riggio-Newark Acad. 304
- E. D'Arcy-Arch. Walsh 147
- B. Johnson-Suffield 305
- K. Mallon-NE Cath. 148
- C. Milito-Bish. Kenrick 305
- M. Muck-Sewickley 149
- V. Aiello-Poly Prep 306
- N. Daly-Haverford 150
- T. Langen-Bishop O'Connell 306
- C. Langlettig-Mt. St. Joes 151
- T. LeFevre-LaSalle 307
- A. Utter-Blair 152
- J. Pugh-Western Res. 307
- N. Redfern-Norfolk 153
- J. Cook-Wilbraham 308
- T. Feeney-Calvert Hall 154
- J. Fasti-Arch. Wood 308
- D. Conway-Gilman 155
- M. Neill-Card. Dough. 309
- J. Rocereto-St. Joes 156
- T. Woods-Md 'Sch. Deaf 309
- T. Chilcott-Malvern 157
- C. Kong-Phillips Ex. 310
- B. Reimer-Model 158
- J. Holland-Bullis 310
- B. Sherwin-Hopkins 159
- G. Campbell-Rutgers Prep 310
- S. Robinson-Brunswick 159
- M. Andrews-Girard 310
- M. Tisdale-Norfolk Cath. 158
- S. Seshun-VEMA 310
- R. Jelinek-Neumann 159
- C. Bernabe-Episcopal 159
- S. O'Hearn-Prov CDS

F1:30
PENDLETON

5-2
PENDLETON

20-3
LITUR.

4-1
Pendleton

F2:30
FASTI

5-3
FASTI

10-3
P. HAVEN

	S. Giha-Prov. CDS	
J. Oliverio-Gonzaga	160	311
D. McGrory-Bishop Kenrick		
J. Worth-Trinity		312
B. Corsello-LaSalle	161	
	J. Farrell-L.I. Lutheran	
	K. McDonald-Neumann	
E. Mangrum-Bishop Treton	162	313
C. Kerr-Acad. New Ch.		
B. Gray-Bish Egan		314
C. Seligman-Rutgers Prep	163	
	V. Haney-Arch. Curley	
	R. Fields-Calvert Hall	
A. Yarnall-Haverford	164	315
B. Palm-Dwight-Engle.		
J. Darden-Norfolk		316
A. Reigel-Stady Side	165	
	D. Mialetti-Card. Dough.	
	M. Bennett-Penn Charter	
T. Young-Brunswick	166	317
E. Weinman-Arch. Walsh		
	R. Klein=Bish. O'Connell	
	J. Gillespie-Card. O'Hara	
	B. Woodward-Wood For.	
K. Bowen-Peddie	168	318
M. McKinney-Arch. Wood		
H. Nagashima-Riverdale		
D. Hammett-Bishop M'Dnam.	169	
	R. Mendys-NE Cath.	
	C. Carter-South Kent	
J. J. Millard-St. Albans	170	319
P. Jaskot-St. Joes		
S. Vanderlilly-Plumstead		
J. Johnson-Friends Acad.	171	
	H. Franklin-Gilman	
	J. Sasala-Hill	
A. Bucholz-St. Stephens	172	320
T. Kwong-Hotchkiss		
R. Wadle-Newark Acad.		
M. Haughton-Vef. Acad.	173	
	S. Hill-Episcopal	
	G. Zurlo-Perkiomen	
J. Robledo-Milton	174	321
A. Kelley-Bullis		
S. Murraray-Martin Luther		
J. Bury-Blair	175	
	D. Gladhill-Md School Deaf	

17-0
MANGRUM

F 3:29
MANGRUM

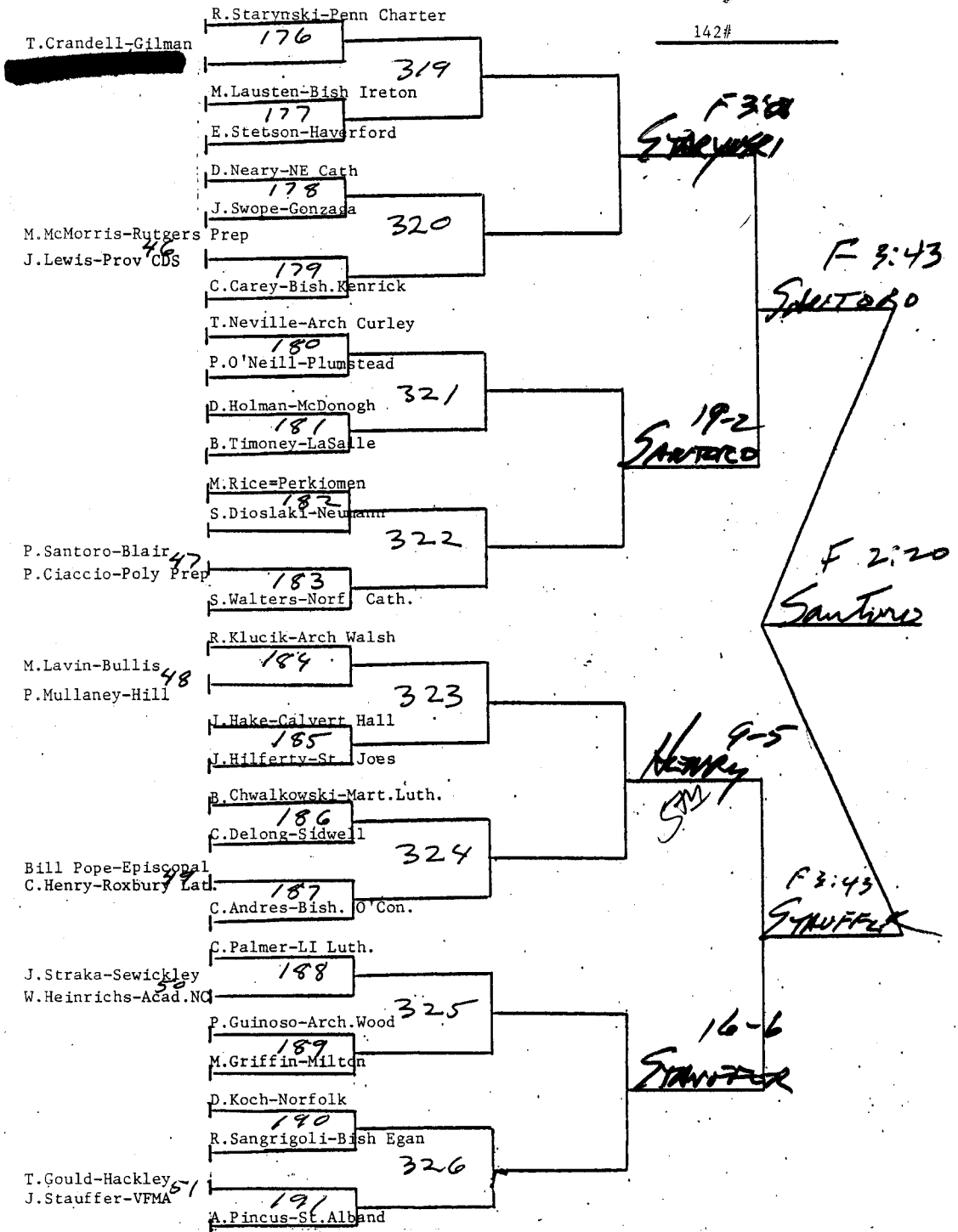
8-4
YARNALL

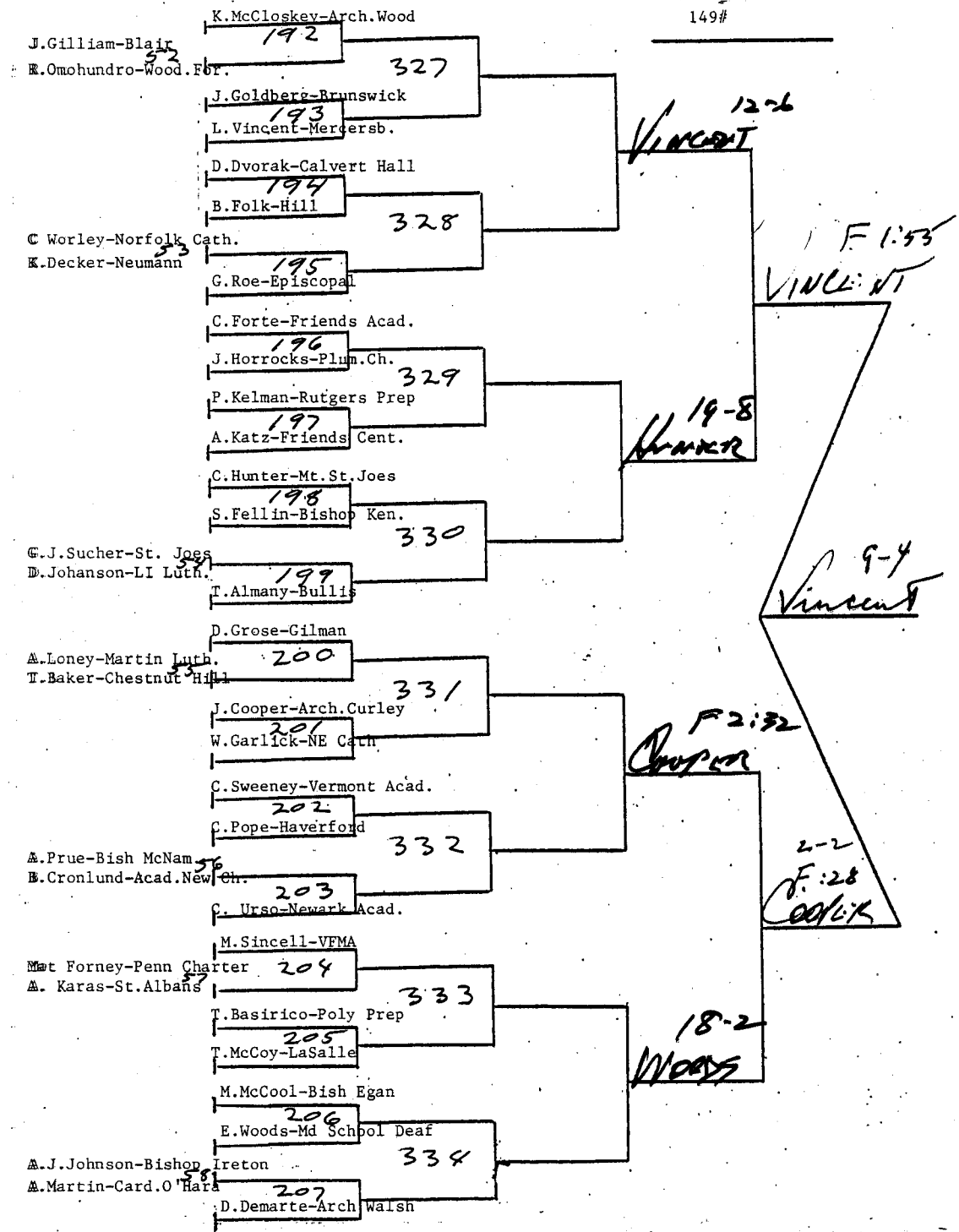
9-5
BURY

5-4
FRANKLIN

13-3
BURY

6-0
BURY





G. Bell-McDonogh

208

M. Lane-Wilbraham

J. Cleri-Bish. Kenr.

D. Reilly-Prov. CDS

209

B. Scanlon-Baptist

K. McNulty-Bish. Egan

210

D. Darlen-Hyde

336

D. Johnson-Friends Ac.

211

M. Plasecki-Haverford

D. O'Brien-Bishop O'Connell

212

J. Kratczek-Hill

337

A. Ross-Trinity

213

M. Weiss-Arch. Curley

B. Bowen-Peddie

214

K. Kennedy-Rivardale

338

G. Gould-Blaire

215

R. Roe-Episcopal

B. Bayle-Malvern

216

J. Labadia-Lawrenceville

339

A. Palmer-Episcopal High

217

M. Hunter-NE Cath.

218

J. Lazard-Middlesex

340

E. Kenworthy-Calvert

219

D. Greco-Dwight Eng.

J. McMullen-Gard O'Hara

220

M. White-Sewickley

341

P. Trotter-Arch. Wood

221

V. Williams-Mc. St. Joes

C. Brown-Norfolk

222

M. McPeak-Card. Dough.

342

J. Britton-VFMA

223

J. Miller-St. Marks (TX)

M. Alvin

5-1

Konowalchik

9-6

Konowalchik

6-2

6-4

8-4

9-2

M. G. B.

D. Healy-Mercers.

171#

D. Driscoll-Neumann

K. Governale-LI Luth.

J. Kernan-NE Cath.

G. Wagner-Tabor

T. Pachonka-Hackley

M. Vettori-Bish. Egan

S. Dean-Mt. St. Joes

J. Callahan-Dwight-Eng.

J. Ehinger-Chest. Hill

T. Kolsun-LaSalle

A. Peltier-Thayer

M. Nipdzielski-Bish. Ken.

G. Whaley-Bish Ireton

B. Chester-Wilbrah.
C. Roe-Episcopal

T. Silvestri-Model

R. Grapes-Bullis

B. Coppock-Card. O'Hara

J. Kreitz-Card. Doug.

M. Carter-St. Step.

P. Kwiterovich-Gilman

L. Fitzgerald-Arch. Wood

M. Dudek-Norf. Cath.

C. Hoyt-Haverford

M. Lehman-Blair

D. Willman-Hill

D. Wasser-Plum. Ch.

R. Tuckman-Rut. Prep

T. O'Donnell-St. Joes

T. Dubner-Friends Acad.

C. Hurchalla-Malvern

A. Konovalchik
West. Reserve

343

344

345

346

347

348

349

350

F 3:95
HEALY

F 3:27
SILVESTRI

16-72
SILVESTRI

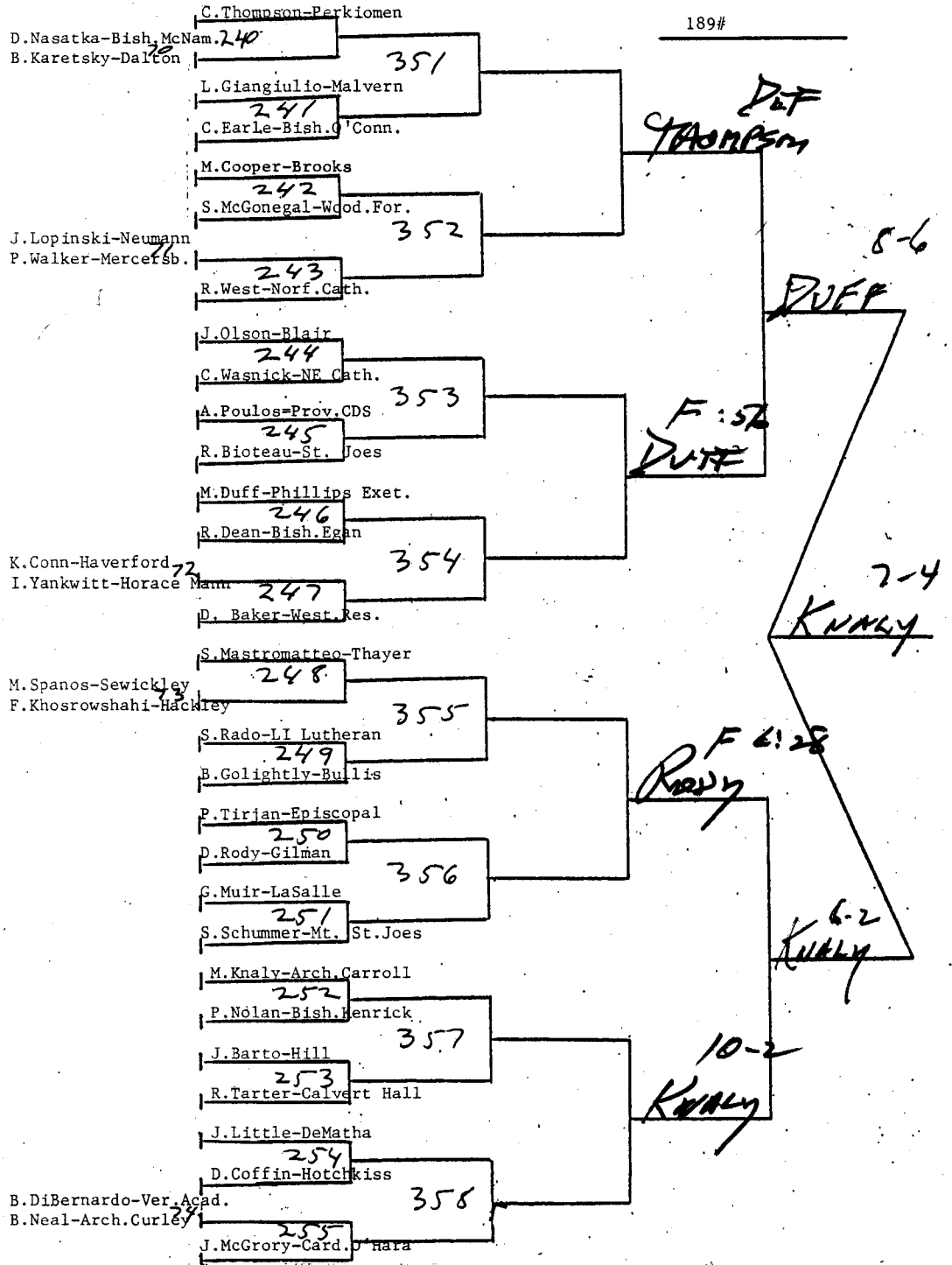
13-9
SILVESTRI

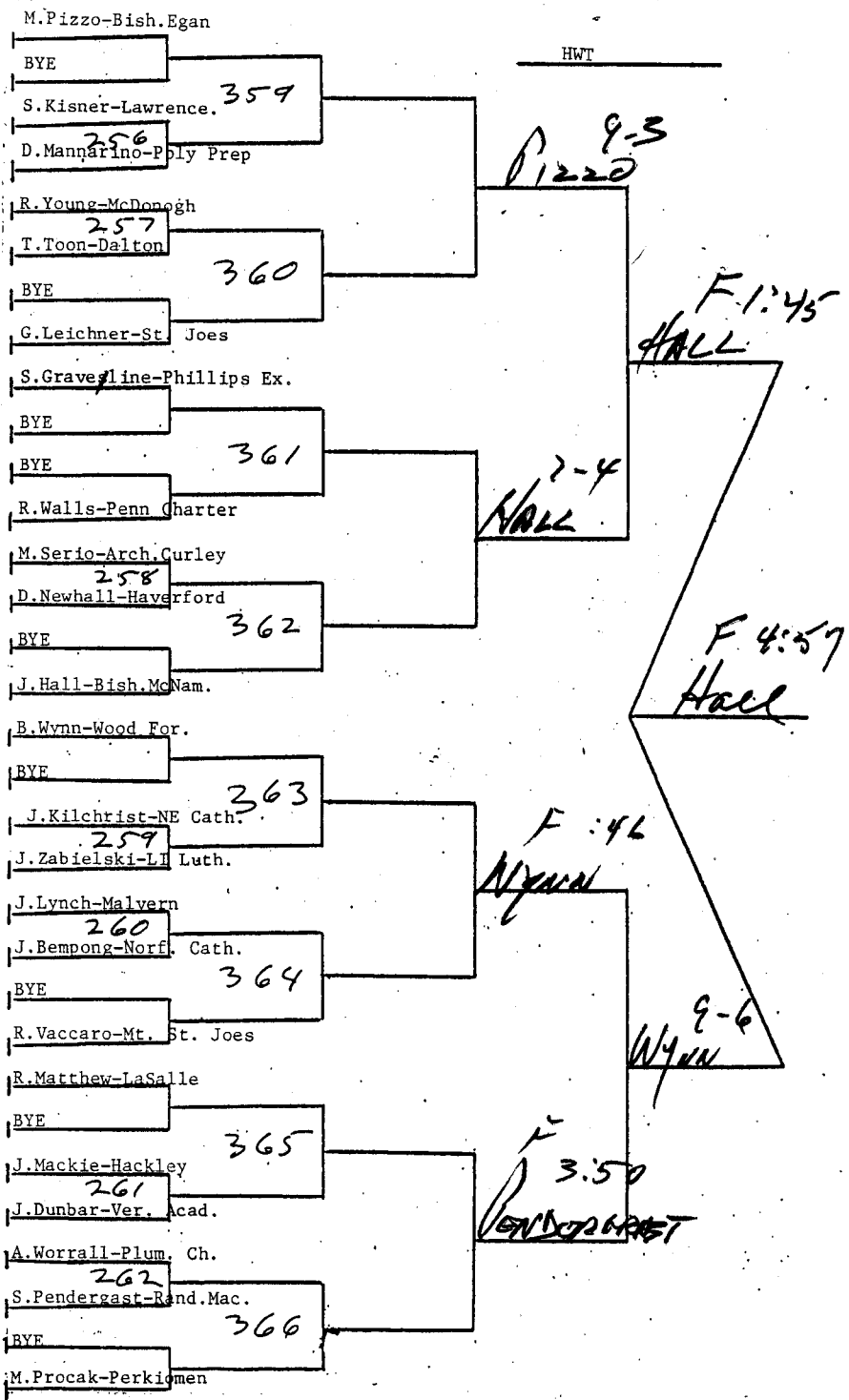
15-4
GRAPES

5-3
GRAPES

4-2
KONOVALCHIK

1985 NAT PREPS





DETRIXHE AND SHERIDAN MEMORIAL TROPHIES

Teams are competing this weekend for the James Detrixhe and Billy Sheridan memorial trophies.

Jim Detrixhe, Lehigh '62, was a champion in this tournament for The Hill School and later an eastern title-winner for Lehigh. He gave his life as an Army ranger captain in Vietnam. Billy Sheridan, a collegiate wrestling pioneer coached Lehigh from 1912

through 1952, establishing the Engineers as eastern and national powers.

The Detrixhe Trophy goes to the highest scoring team in the undergraduate division. The Sheridan Trophy is presented to a post-graduate division team if its point total is higher than the undergraduate winner's score.

WINNER	TOURNAMENT HISTORY RUNNERUP	OUTSTANDING WRESTLER
1935 Newton (NJ) H.S.	Shamokin, PA H.S	
1937 Wyoming Seminary	Mercersburg Academy	
1938 Mercersburg Academy	Wyoming Seminary	
1939 F & M Academy	Wyoming Seminary	
1940 F & M Academy	Wyoming Seminary	
1941 F & M Academy	Wyoming Seminary	
1942 F & M Academy	Wyoming Seminary	
1943 Mercersburg Academy	Valley Forge Military	
1944 Mercersburg Academy	Brooklyn Poly Prep	
1945 Mercersburg Academy	Gilman School	
1946 Mercersburg Academy	Blair Academy	
1947 Wyoming Seminary	Mercersburg Academy	John Mahoney, Wyoming
1948 Wyoming Seminary	Hill School	Bruce Mowery, Hill
1949 The Hill School	Wyoming Seminary	W. Carlisle Jr., Lawrenceville
1950 The Hill School	Mercersburg Academy	Clinton Blume, Trinity
1951 The Hill School	Wyoming Seminary	Andrew Kaul, Hill
1952 The Hill School & Wyoming Seminary (TIE)	Wyoming Seminary (TIE)	Constantine Filipos, Valley Forge
1953 The Hill School	Milton Hershey	Richard Green, Mercersburg
1954 The Hill School	Stevens Trade	Nolan Perry, Milton Hershey
1955 The Hill School & Milton Hershey (TIE)	Milton Hershey (TIE)	Louis Winner, Mercersburg
1956 The Hill School	Milton Hershey	William Leeman, Mercersburg
1957 The Hill School	Milton Hershey	Jerry Seckler, St. Paul's
1958 The Hill School	Milton Hershey	Kirk Pendleton, Bryn Athyn
1959 The Hill School	Milton Hershey	Bob Chappell, Hill
1960 Bryn Athyn	The Hill School	John Gladish, Bryn Athyn
1961 The Hill School	Milton Hershey	Roger Oleson, Hill
1962 St. Benedict's	Wyoming Seminary	Bill Harlow, St. Andrew, TN
1963 The Hill School & Milton Hershey (TIE)	Milton Hershey (TIE)	Bob Fehrs, Milton Hershey
1964 The Hill School	Milton Hershey	Don Goodworth, Milton Hershey
1965 The Hill School	M. Hershey & Baylor	Jeff Hensen, Hill
1966 Milton Hershey	Baylor & St. Benedict	Lou Hudson, McCallie, TN
1967 St. Benedict's	Baylor	Dave Icenhower, Penn Charter
1968 The Hill School	McCallie	James Krapf, Tatnall
1969 Milton Hershey	St. Benedict's	James Krapf, Tatnall
1970 Baylor	The Hill School	Walt Sexton, NY Mil. Acad.
1971 The Hill School	McCallie	Doug Schutte, Hill
1972 Milton Hershey	Haverford	Jay Martin, Valley Forge Mil.
1973 Haverford School	Blair	Mark Lieberman, Blair
1974 Blair Academy	Blue Ridge	Mark Lieberman, Blair
1975 Blue Ridge	McDonogh	Larry Hauserman, Hawken
1976 Mt. St. Joseph's	St. Andrews	Kevin Mulligan, Suffield
1977 Mt. St. Joseph's	Haverford	Scott Parrish, Blue Ridge
1978 Mt. St. Joseph's	St. Andrew's	Bob Weaver, Blair
1979 Germantown Academy	Haverford	Jim Reilly, Germantown Academy
1980 Mt. St. Joseph's	Blair	Glenn Ammon, Blair
1981 Blair Academy	Penn Charter	Jamie Grebosky, Shady Side
1982 Bishop Egan (U) and Blair Academy (PG)		Lou Chiapparelli, Blair
1983 Mt. St. Joseph (U) and Blair Academy (PG)		Lenny Bernstein, Bullis
1984 Mt. St. Joseph (U) and Blair Academy (PG)		Sean Schaufele, Mt. St. Joseph